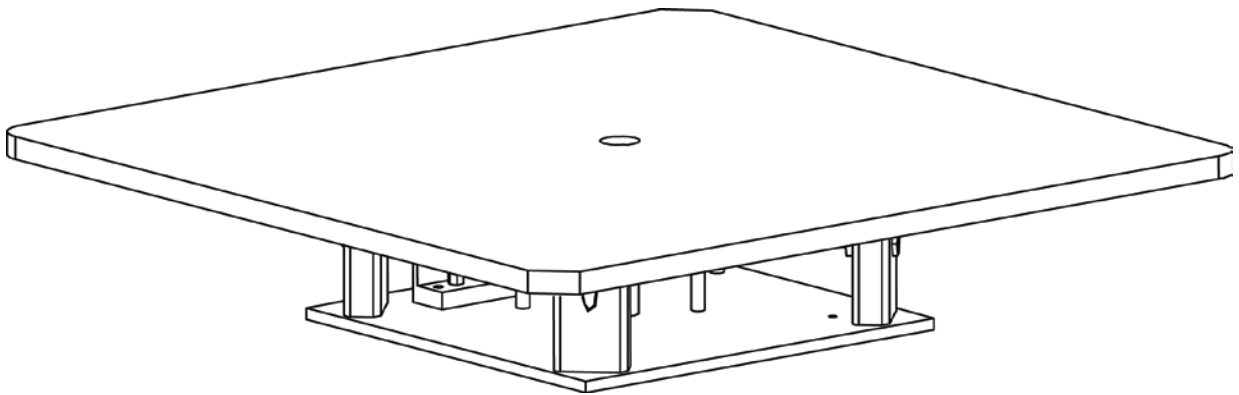


# INSTALLATION, OPERATION AND SERVICE MANUAL

## SR4 Manual Turntable



P.O. Box 1058 • 1058 West Industrial Avenue • Guthrie, OK 73044-1058 • 888-811-9876 •  
405-282-5200 • FAX: 405-282-3302 • [www.autoquip.com](http://www.autoquip.com)

Item #830SR4

Version 3.1

<b>1.</b>	<b>Introduction And Warranty .....</b>	<b>3</b>
1.1	Introduction .....	3
1.1.1	Identification .....	3
1.1.2	Inspection .....	3
1.1.3	Planned Maintenance Program.....	3
1.2	Responsibility Of Owners/Users .....	3
1.2.1	Deflection .....	3
1.2.2	Inspection & Maintenance.....	4
1.2.3	Removal From Service .....	4
1.2.4	Repairs.....	4
1.2.5	Operators .....	4
1.2.6	Before Operation .....	4
1.2.7	During Operation .....	4
1.2.8	Modifications Or Alterations .....	4
1.3	Warranty .....	5
<b>2.</b>	<b>Specifications.....</b>	<b>6</b>
2.1	Series 35 Models .....	6
2.2	Load Capacity.....	6
2.3	Unbalanced Loading .....	7
<b>3.</b>	<b>Safety .....</b>	<b>8</b>
3.1	Safety Signal Words .....	8
3.2	Installation .....	8
3.3	Operation.....	9
3.4	Maintenance .....	9
3.5	Modifications.....	9
3.6	Labels.....	10
<b>4.</b>	<b>Installation .....</b>	<b>12</b>
4.1	Floor Mounting.....	12
4.2	Lift Mounting – Operating Above Floor Level .....	12
4.3	Lift Mounting – Operating Above and Below Floor Level.....	13
4.4	Clean Up.....	14
<b>5.</b>	<b>Operation .....</b>	<b>19</b>
5.1	Operate Safely.....	19
5.2	Forces Required to Operate Manual Turntable .....	19
<b>6.</b>	<b>Maintenance .....</b>	<b>20</b>
6.1	Routine Maintenance .....	20
6.1.1	Every Month Or 100 Hours Of Operation .....	20
<b>7.</b>	<b>Troubleshooting.....</b>	<b>22</b>
<b>8.</b>	<b>Parts.....</b>	<b>23</b>

# I. INTRODUCTION AND WARRANTY

---

## I.1 Introduction

---

Please read and understand this manual prior to installation or operation of this turntable. Failure to do so could lead to property damage and/or serious personal injury. If you have any questions, call a local dealer or *Autoquip Corporation* at 1-888-811-9876 or 405-282-5200.

Please record the following information and refer to it when calling your dealer or Autoquip.

Model Number: \_\_\_\_\_ Serial Number: \_\_\_\_\_

Installation Date \_\_\_\_ / \_\_\_\_ / \_\_\_\_

### I.1.1 Identification

When ordering parts or requesting information or service on this turntable, PLEASE REFER TO THE MODEL AND SERIAL NUMBER. This information is on a nameplate attached to the turntable assembly. Replacement parts are available from a local *Autoquip* distributor.

### I.1.2 Inspection

Upon receipt of the turntable, perform a visual inspection to determine that the turntable has not been damaged in transit. Any damage found must be noted on delivery receipt. In addition to this preliminary inspection, carefully inspect turntable for concealed damage. Any concealed damage found that was not noted on delivery receipt must be reported in writing to the delivering carrier within 48 hours.

Use the following checklist for inspection of turntable:

1. Examine entire unit for any signs of mishandling.
2. Remove the center axle bolt and washers. Using an overhead hoist, remove the turntable platform. Thoroughly examine all base rollers, bolts and hex nuts. Inspect the base frame and turntable, making sure they have not been damaged during transit.
3. After inspection, lag the turntable base securely to the floor or lift platform. Using the overhead hoist, assemble the turntable on the base, and inspect the turntable operation.

### I.1.3 Planned Maintenance Program

A local *Autoquip* representative provides a Planned Maintenance Program (PMP) for this equipment using factory-trained personnel. Call a local representative or *Autoquip Corporation* at 1-888-811-9876 or 405-282-5200 for more information.

## I.2 Responsibility Of Owners/Users

---

### I.2.1 Deflection

It is the responsibility of user/purchaser to advise manufacturer where deflection may be critical to the application.

## **I.2.2 Inspection & Maintenance**

The turntable shall be inspected and maintained in proper working order in accordance with Autoquip's operating/maintenance (O&M) manual and with other applicable safe operating practices.

## **I.2.3 Removal From Service**

Any turntable not in safe operating condition such as, but not limited to, missing rollers, pins, or fasteners, any bent or cracked structural members, cut or frayed electrical wires, damaged or malfunctioning detents or manual locks, etc. shall be removed from service until it is repaired to the original manufacturer's standards.

## **I.2.4 Repairs**

All repairs must be made by a qualified technician in conformance with Autoquip's instructions.

## **I.2.5 Operators**

Only trained personnel and authorized personnel shall be permitted to operate turntable.

## **I.2.6 Before Operation**

Before using turntable, operator must:

- Read and/or had explained, and understood, manufacturer's operating instructions and safety rules.
- Inspected turntable for proper operation and condition. Any suspect item must be carefully examined and a determination made by a qualified person as to whether it constitutes a hazard. All items not in conformance with Autoquip's specification must be corrected before operating turntable.

## **I.2.7 During Operation**

Use turntable in accordance with Autoquip's O&M manual.

- Do not overload turntable.
- Verify all safety devices are operational and in place.

## **I.2.8 Modifications Or Alterations**

Modifications or alterations to this equipment may be made only with written permission of Autoquip. Unauthorized modification or alteration will void warranty.

## I.3 Warranty

---

The user is solely responsible for using this equipment in a safe manner and observing all of the safety guidelines provided in the Owner's Manual and on the warning labels provided with the turntable. If you are unable to locate either the manual or the warning labels, please contact Autoquip or access [www.autoquip.com](http://www.autoquip.com) for replacement downloads or information.

Autoquip Corporation expressly warrants that this product will be free from defects in material and workmanship under normal, intended use for a period of Two (2) Years for Labor and all electrical and mechanical components, parts or devices, and warrants the structure of the turntable against breakage or failure for a period of Five (5) years. The warranty period begins from the date of shipment. When making a claim, immediately send your dealer or Autoquip notice of your claim. All claims must be received by Autoquip within the warranty time period. The maximum liability of Autoquip, under this Limited Warranty, is limited to the replacement of the equipment.

This warranty shall not apply to any Autoquip turntable or parts of Autoquip turntable that have been damaged or broken in transit/shipping, or due directly or indirectly to misuse, abuse, vehicle impact, negligence, faulty installation, fire, floods, acts of God, accidents, or that have been used in a manner contrary to the manufacturer's limitations or recommendations as stated in the manual, or that have been repaired, altered or modified in any manner outside of Autoquip Corp's manufacturing facility or which have not been expressly authorized by Autoquip.

Autoquip Corporation makes no warranty or representation with respect to the compliance of any equipment with state or local safety or product standard codes, and any failure to comply with such codes shall not be considered a defect of material or workmanship under this warranty. Autoquip Corporation shall not be liable for any direct or consequential damages resulting from such noncompliance.

Autoquip Corporation's obligation under this warranty is limited to the replacement or repair of defective components at its factory or another location at Autoquip Corp's discretion at no cost to the owner. This is owner's sole remedy. Replacement parts (with exception of electrical components) will be warranted for a period of ninety (90) days. Except as stated herein, Autoquip Corporation will not be liable for any loss, injury, or damage to persons or property, nor for direct, indirect, or consequential damage of any kind, resulting from failure or defective operation of said equipment. All parts used to replace defective material must be genuine Autoquip parts in order to be covered by this Limited Warranty.



AUTOQUIP CORP  
P.O. Box 1058, Guthrie, OK 73044-1058  
Telephone: (888) 811-9876 · (405) 282-5200  
Fax: (405) 282-3302  
[www.autoquip.com](http://www.autoquip.com)

## 2. SPECIFICATIONS

---

### 2.1 Series 35 Models

---

Turntable Model	Cap. (Lbs.)	Base Frame Width (In.)	Base Frame Length (In.)	Min. Platform Width (In.)	Min. Platform Length (In.)	Max. Platform Width (In.)	Max. Platform Length (In.)	Lowered Height	Shipping Weight (Lbs.)
SR4-3636-025	2500	24	24	36	36	36	36	4	200
SR4-3636-040	4000	24	24	36	36	36	36	4	200
SR4-3636-060	6000	24	24	36	36	36	36	4	200
SR4-4242-025	2500	24	24	42	42	42	42	4	275
SR4-4242-040	4000	24	24	42	42	42	42	4	275
SR4-4242-060	6000	24	24	42	42	42	42	4	275
SR4-4248-025	2500	24	24	42	48	42	48	4	300
SR4-4248-040	4000	24	24	42	48	42	48	4	300
SR4-4248-060	6000	24	24	42	48	42	48	4	300
SR4-4848-025	2500	24	24	48	48	48	48	4	350
SR4-4848-040	4000	24	24	48	48	48	48	4	350
SR4-4848-060	6000	24	24	48	48	48	48	4	350

### 2.2 Load Capacity

---

The load capacity rating is labeled on the top of the turntable platform.



**The turntable should not be overloaded beyond the established capacity as damage and/or personal injury may result.**

When attaching the turntables to other pieces of equipment such as scissors lifts, remember that the rated capacity of the turntable must not exceed the rated capacity of the lift, tilter, etc.

## 2.3 Unbalanced Loading

---

All standard turntable capacities assume that the load on the turntable is uniformly distributed and that the center of gravity of the load is placed within 10" of the center pin.

Standard turntables are not designed to withstand true edge or axle loading. If edge or axle loading is anticipated, additional turntable support rollers must be located at the turntable edges. Contact Autoquip Service Department for questions on turntable loading.

### **WARNING**

**Load the turntable top as evenly as possible to prevent overloading. Excessive eccentric loading may overstress the turntable structure and cause the load to become unstable, possibly resulting in serious personal injury or permanent equipment damage.**


## 3. SAFETY

---

### 3.1 Safety Signal Words

---

This Owner's Manual covers SR4 Manual Turntables produced by Autoquip. Before installing, operating or servicing turntable, you must read, understand and follow the instructions and safety warnings in this manual. Your turntable may not be equipped with some optional equipment shown in this manual.

The safety information in this manual is denoted by the safety alert symbol: 

The level of risk is indicated by the following signal words.

#### **DANGER**

**DANGER** – Indicates a hazardous situation, which, if not avoided, will result in death or serious injury.

#### **WARNING**

**WARNING** – Indicates a hazardous situation, which, if not avoided, could result in death or serious injury.

#### **CAUTION**

**CAUTION** – Indicates a hazardous situation, which, if not avoided, could result in minor or moderate injury.

#### **NOTICE**

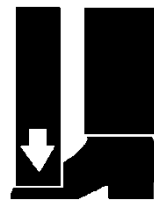
**NOTICE** – Indicates a situation that could result in damage to the turntable or other property.

### 3.2 Installation

---

#### **DANGER**

The turntable base **MUST** be lagged securely to the floor or sufficient structure, or attached to a lift platform (when applicable) before operating the turntable. An unsecured base could become unstable and cause the load to shift unexpectedly resulting in serious personal injury or death.



#### **WARNING**

Do not install the turntable in a pit unless it has beveled-toe guards or other approved toe protection. A shear point can exist which can cause severe personal injury.



### 3.3 Operation

---

**⚠ WARNING**

Prevent serious injury or death.

Load the turntable top as evenly as possible to prevent overloading. Excessive eccentric loading may overstress the turntable structure and cause the load to become unstable, possibly resulting in serious personal injury or permanent equipment damage.

Overloading, or uneven loading, could result in load instability and cause serious personal injury.

Stay clear of turntable while it is in motion.

Never stand, sit or ride on turntable.

**⚠ WARNING**

Prevent serious injury or death.

**NEVER** stand, sit, or ride on the turntable! A rotating work surface may shift position unexpectedly and cause serious personal injury.

### 3.4 Maintenance

---

**⚠ WARNING**

Prevent serious injury or death.

Never go under turntable until load is removed and scissors mechanism is securely blocked in raised position with maintenance devices.



### 3.5 Modifications

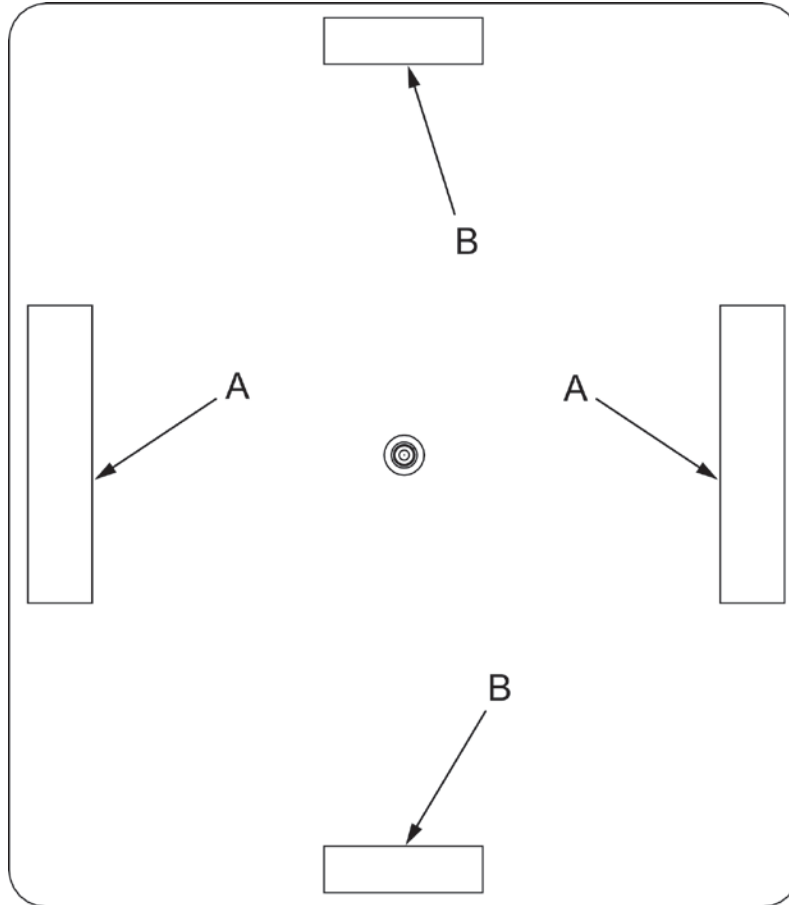
---

**⚠ DANGER**

Prevent serious injury or death.

Extending the platform length or width beyond the factory limit could cause the turntable to tip and the load to shift unexpectedly, resulting in personal injury or death.

### 3.6 Labels



Top of Turntable

**Autoquip**  
LIFTING SOLUTIONS<sub>SM</sub>  
1058 W. INDUSTRIAL AVE.  
GUTHRIE, OK 73044-1058  
1-888-811-8876  
www.autoquip.com

**,000 LBS.  
CAPACITY**

36401586

A – 36401586



B – 36403706

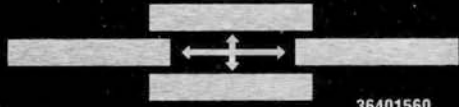
**Autoquip**<sup>®</sup>  
CORPORATION

A SUBSIDIARY OF  
**MINER**  
ENTERPRISES INC.

P.O. Box 1058  
1058 W. INDUSTRIAL  
GUTHRIE, OK 73044-1058  
888-811-9876  
WWW.AUTOQUIP.COM.

MAXIMUM LOAD [REDACTED]  
MODEL NUMBER [REDACTED]  
SERIAL NO. [REDACTED]

MAXIMUM  
AXLE LOAD  
OVER EDGES



36401560

36401560

**⚠ WARNING**

To protect against death or serious injury, all labels must be on turntable and must be legible.

If any of these labels are missing or cannot be read, call Autoquip for replacement labels.

## 4. INSTALLATION

---

### 4.1 Floor Mounting

---

#### **NOTICE**

When moving the turntable assembly, do not pick up the turntable assembly by the turntable PLATFORM; it is attached to the turntable base and could be damaged. Pick up the turntable from under the Base Plate ONLY.

1. Verify the mounting surface is clean before starting.
2. Place the turntable base in the installation area. Set the turntable platform aside for now.
3. The base plate of the turntable has pre-drilled holes for lagging the turntable securely to the floor or lift. Mark the holes, drill, and install with anchors. Verify that the surface that the turntable will be mounted on is of sufficient strength to support the loads.

#### **⚠ DANGER**

**The turntable base MUST be lagged securely to the floor or sufficient structure, or attached to a lift platform (when applicable) before operating the turntable. An unsecured base could become unstable and cause the load to shift unexpectedly resulting in serious personal injury or death.**

4. Install the turntable platform to the turntable base plate as shown in Figure 1.

### 4.2 Lift Mounting – Operating Above Floor Level

---

#### **NOTICE**

When moving the turntable assembly, do not pick up the turntable assembly by the turntable PLATFORM; it is attached to the turntable base and could be damaged. Pick up the turntable from under the Base Plate ONLY.

1. Verify the mounting surface is clean before starting.
2. Center the turntable base on the lift platform. Remove the turntable center axle bolt and set the turntable platform aside for now. NOTE: When removing the center axle bolt, note the position of the washers for future re-assembly.
3. The base plate of the turntable has pre-drilled holes for attaching the turntable base securely to the lift platform. Mark the turntable base mounting holes, drill, and attach with Class 2 (or higher) hardware. The turntable base must be welded or bolted to the lift platform, if desired (See Figure 2).

**⚠ DANGER**

The turntable base **MUST** be lagged securely to the floor or sufficient structure, or attached to a lift platform (when applicable) before operating the turntable. An unsecured base could become unstable and cause the load to shift unexpectedly resulting in serious personal injury or death.

4. Install the turntable platform to the turntable base as shown in Figure 1.

### 4.3 Lift Mounting – Operating Above and Below Floor Level

---

**NOTICE**

When moving the turntable assembly, do not pick up the turntable assembly by the turntable PLATFORM; it is attached to the turntable base and could be damaged. Pick up the turntable from under the Base Plate **ONLY**.

1. Verify the mounting surface is clean before starting.
2. Center the turntable base on the lift platform. Set the turntable platform aside for now.
3. The base plate of the turntable has pre-drilled holes for attaching the turntable securely to the lift platform. Mark the holes, drill, and attach with Class 2 (or higher) hardware. The turntable base may be welded to the lift platform, if desired (See Figure 2).

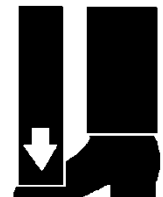
**⚠ DANGER**

The turntable base **MUST** be bolted or welded securely to a lift platform before operating the turntable. An unsecured base could become unstable and cause the load to shift unexpectedly resulting in serious personal injury or death.

4. Install the turntable platform to the turntable base as shown in Figure 1.
5. Turntables that have platform sizes larger than the lifts to which they are attached must have toe protection, such as beveled-toe guards.

**⚠ WARNING**

**Do not install the turntable in a pit unless it has beveled-toe guards or other approved toe protection. A shear point can exist which can cause severe personal injury.**



6. Check the pit dimensions. Overall length and width should be a minimal two inches longer and wider than the turntable platform.
7. To ensure that the turntable is positioned exactly over the opening in the floor before it is lowered, a position switch is mounted and wired to the turntable base (See Figure 3)
8. Lower the lift into the pit and check for proper combined height.

9. Position and adjust the platform in the pit making sure there is proper clearance (1" minimum around the edges from the platform to the pit angle).
10. Make the permanent electrical connections and operate the lift through a few cycles, ensuring that the lift will not lower if the turntable platform is not in the proper position.

## 4.4 Clean Up

---

1. Clean up any debris from the area. A clean installation makes a good impression and creates a much safer environment!
2. Touch-up paint may be purchased from Autoquip for repair of damaged paint surfaces.

### **WARNING**

**All warning and information decals should be in place as outlined in the "Label Identification" section. If decals are missing or damaged, they should be replaced with new ones. Contact Autoquip for replacements.**

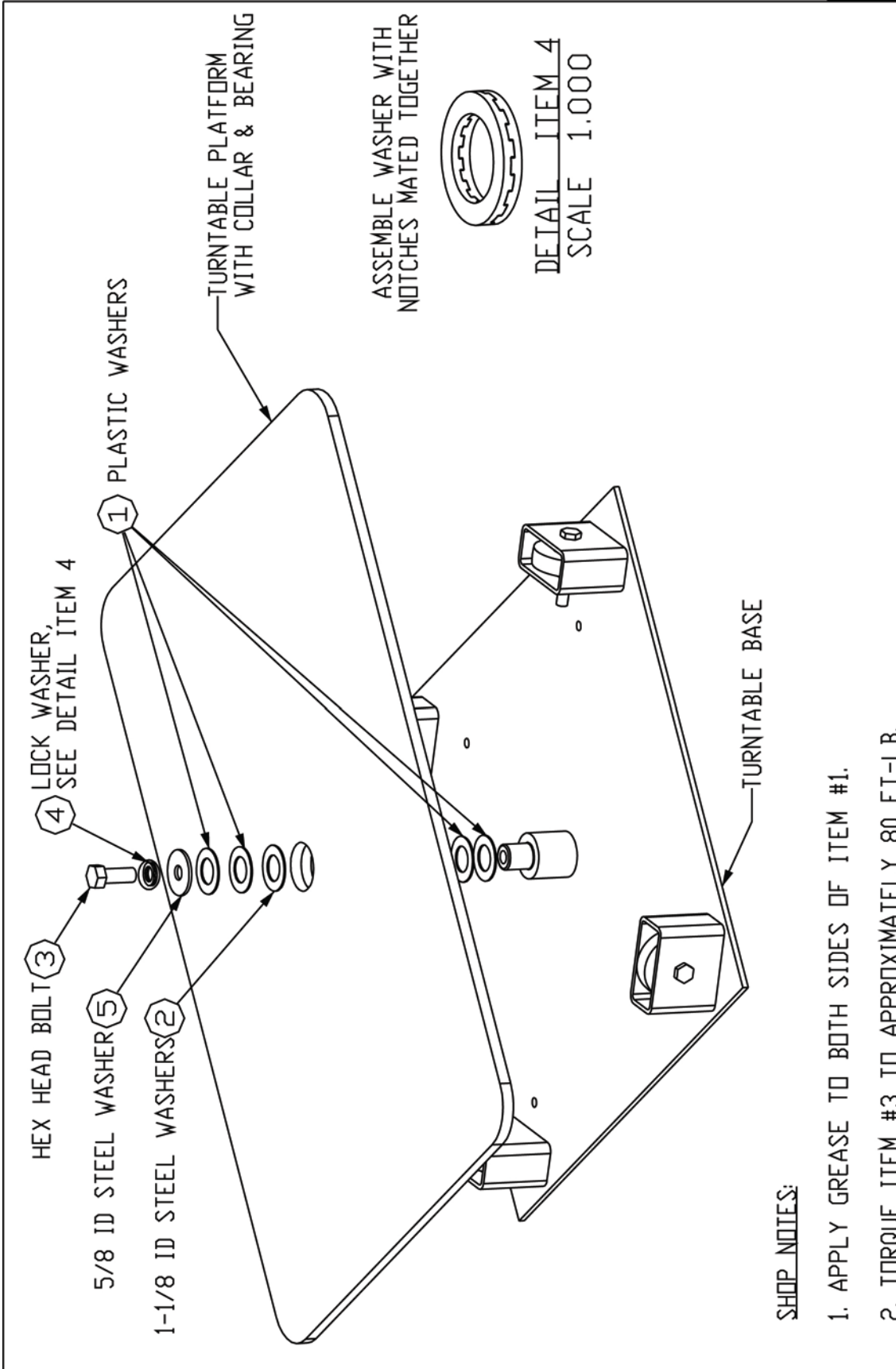
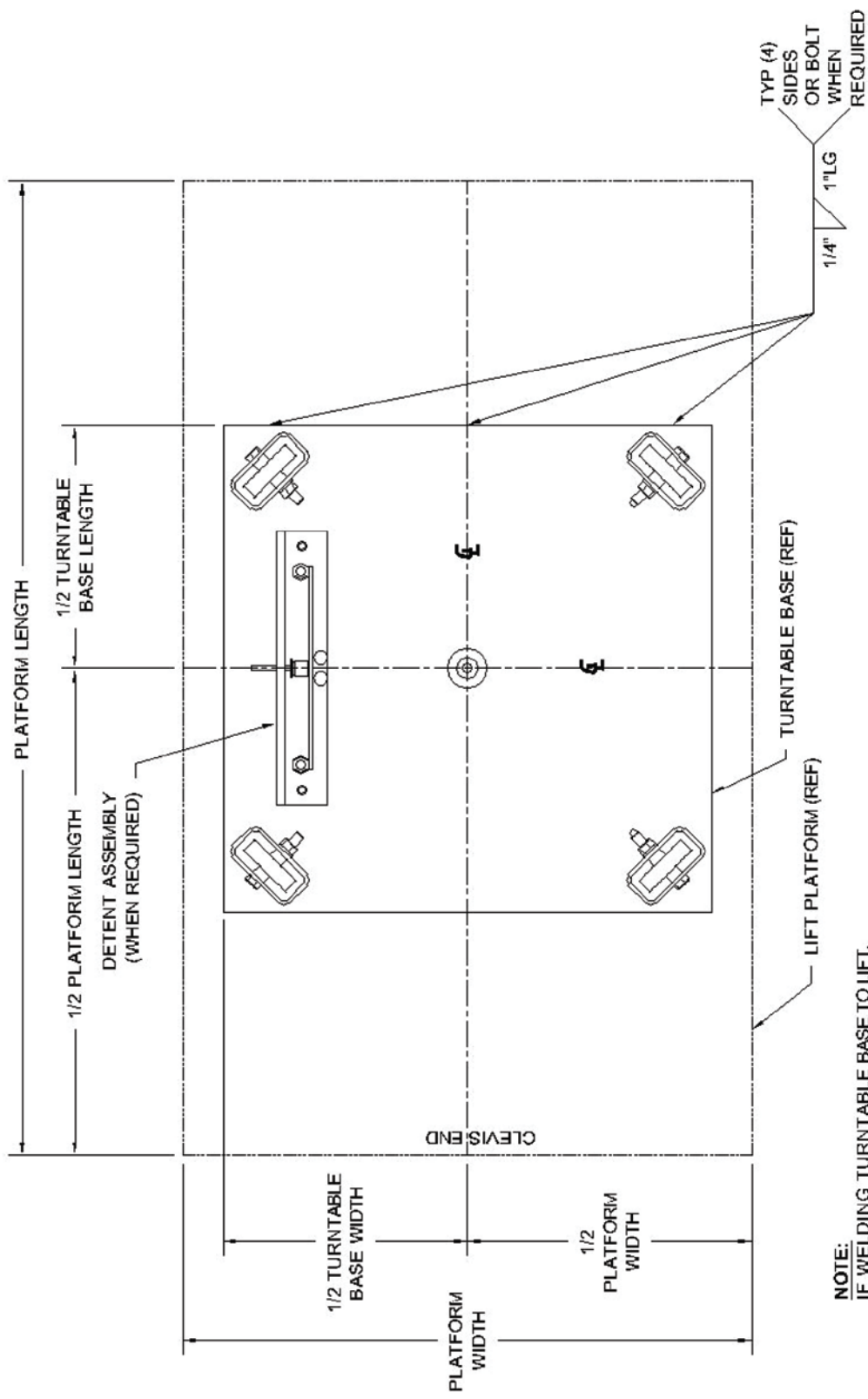


Figure 1

**SHOP NOTES:**

1. APPLY GREASE TO BOTH SIDES OF ITEM #1.
2. TORQUE ITEM #3 TO APPROXIMATELY 80 FT-LB.

COPYRIGHT RESERVED AUTOQUIP CORPORATION		<i>Autoquip</i> Box 1058 GUTHRIE, OK 73044		REV. NO.	BY	DATE
This drawing is the sole property of Autoquip Corp. and cannot be used for design & construction without permission of Autoquip Corp.		REFERENCE DWG	DRAWING TITLE: KIT, BOLT & WASHER, MAN TT, SR4, 4LH	JOB NAME: RSM		NO. J. NO.
APPROXIMATE WEIGHT: <1K	DRAWN BY: RSM	DATE: 10-Feb-99	REV. NO. 1	DRAWING NUMBER: 35106120	1 OF 1	SIZE: A



NOTE:  
 IF WELDING TURNTABLE BASE TO LIFT,  
 APPLY WEIGHT TO CENTER OF TURNTABLE  
 BASE TO KEEP FROM BOWING.

<b>Autoquip</b>		JOB NAME:		ORDER NO.:	
REFERENCE DRAWING:	DRAWING TITLE:	SR4 BASE LOCATION ON S35 PLATFORM			
APPROXIMATE WEIGHT:	DRAWN BY:	DATE:	QTY REQ'D:	PAGE:	REV.:
<1K	CWG	6/18/99	1 OF 1	5	61884700
					SIZE:
					A

Figure 2



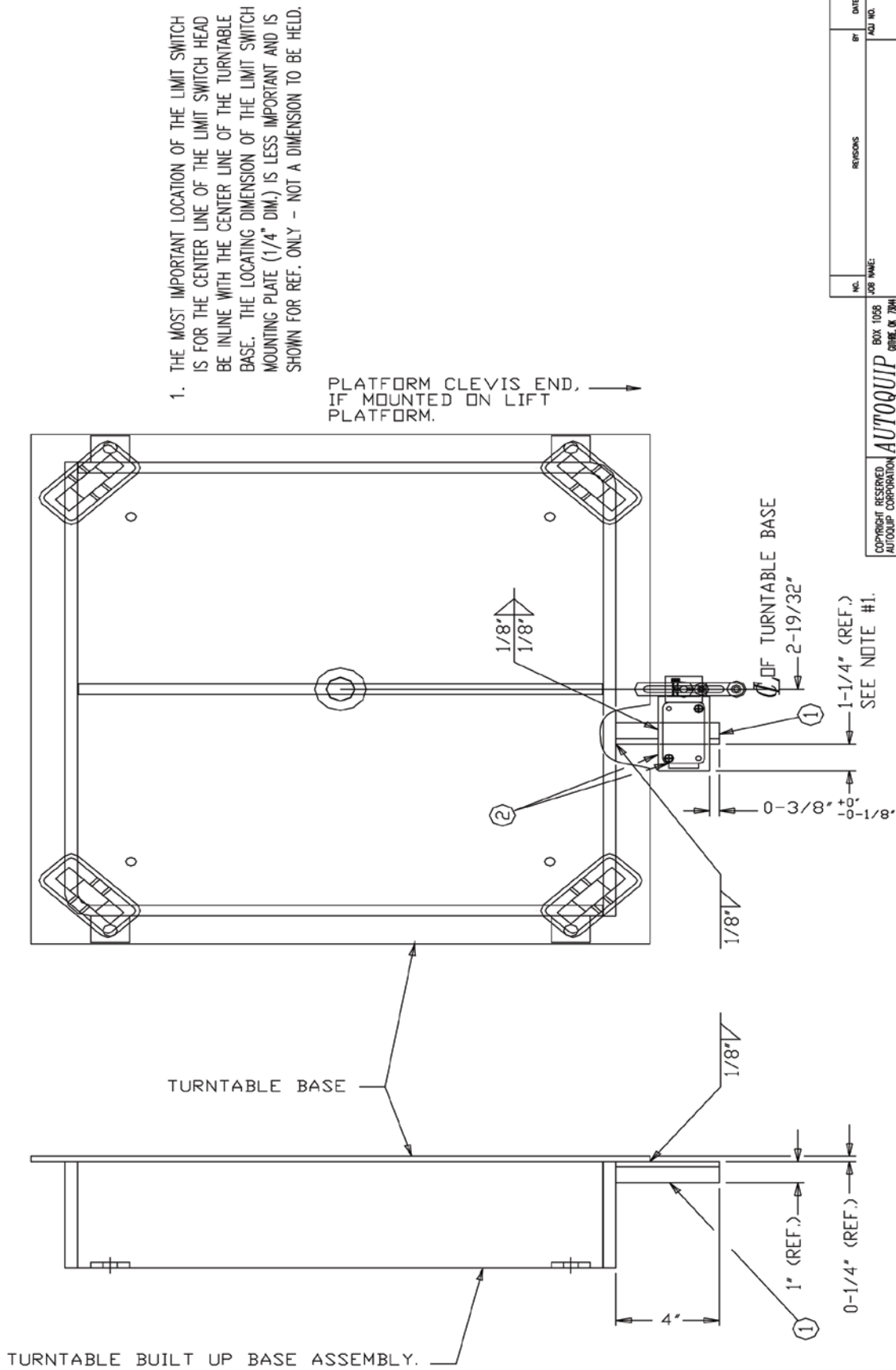
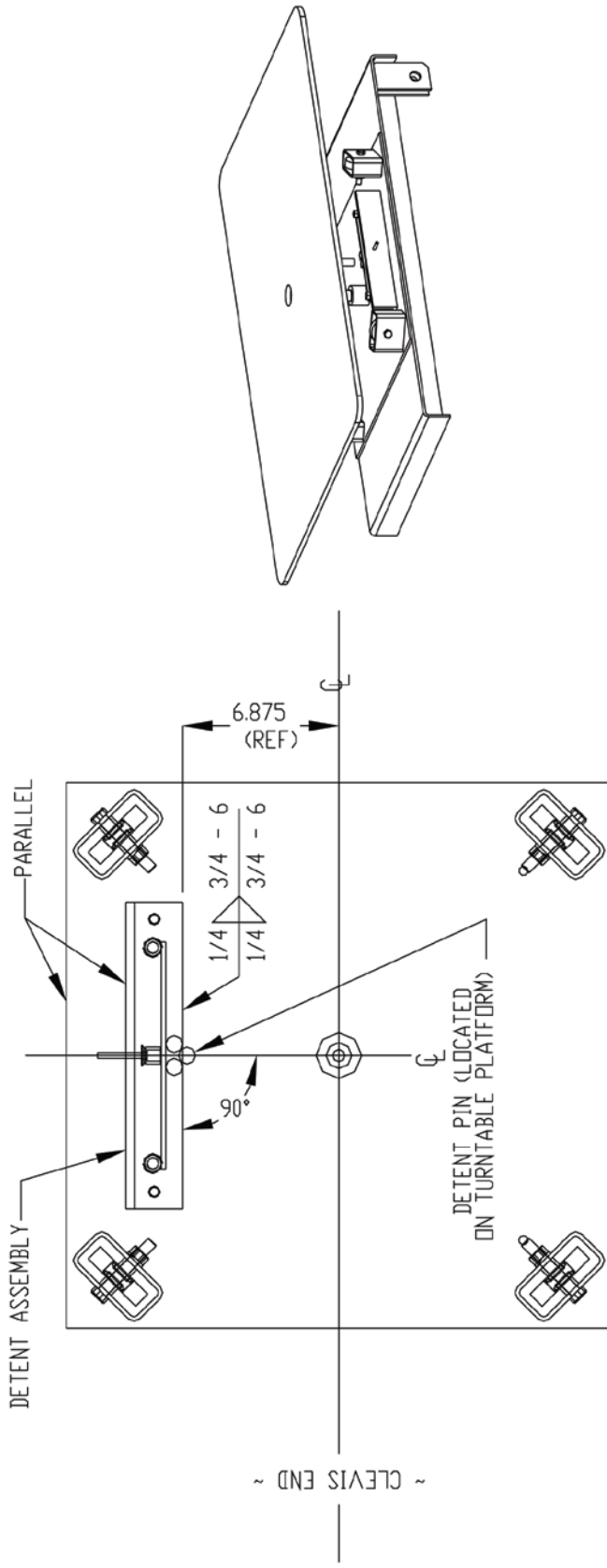


Figure 3

COPYRIGHT RESERVED AUTOQUIP CORPORATION	REVISIONS	NO.	DATE
THIS DRAWING IS THE PROPERTY OF AUTOQUIP CORPORATION AND SHALL BE USED ONLY FOR THE PURPOSES AND CONSTRUCTION WITHOUT PERMISSION OF AUTOQUIP CORP.	APPROXIMATE WEIGHT: <2T	DRIVING TITLE: SS	DATE: 6/12/96
BOX 1055 DRIVE, OK 7344	REVISIONS	JOB NAME:	DATE
LOC. LIMIT SW. END MTG TO TT BLT-UP BASE.	1 of 1	DRIVING NUMBER:	604-0148-0
DRIVING INI DATE: 6/12/96	1	DRIVING NUMBER:	B



TOP VIEW  
 (TURNABLE PLATFORM NOT SHOWN FOR CLARITY)

DETTENT INSTALLATION PROCEDURE:

1. TURN ADJUSTMENT UNTIL TECSPAC IS IN FIRM, BUT UNCOMPRESSED, CONTACT WITH BAR.
2. TIGHTEN ADJUSTMENT WITH (4) ADDITIONAL COMPLETE TURNS.
3. LOCATE DETENT ASSEMBLY AGAINST DETENT PIN & PARALLEL WITH SIDE OF PLATFORM.
4. WELD OR BOLT THE ASSEMBLY IN PLACE.

COPYRIGHT RESERVED  
 AUTOQUIP CORPORATION  
 This drawing is the sole property of Autoquip Corp. and cannot be used for design and construction without permission of Autoquip Corp.

<b>Autoquip</b>		JOB NAME:	
REFERENCE DRAWING:	DRAWING TITLE: OPTIONAL DETENT INSTALLATION		
APPROXIMATE WEIGHT:	DRAWN BY: RSM	DATE: 03-FEB-99	QTY RECD: PAGE: 1 OF 1
	REV.:	2	DRAWING NUMBER: 61883630
			SIZE: A
			ORDER NO:

Figure 4

## 5. OPERATION

### 5.1 Operate Safely

1. Turntables have maximum capacities that vary depending on the model (See “Specifications” section). Applying loads that exceed the rated capacity of the turntable may result in excessive wear and damage to the turntable as well as possible personal injury.
2. Always place the load as close as possible to the center of the turntable platform. Standard turntables are designed to operate optimally with the center of gravity of the load within 10 inches of the center pin of the turntable.
3. The standard turntable is not designed to withstand high-point loads (pallet jacks or carts wheeled onto the platform, conveyed loads rolling onto the platform, etc.) on the outside edge of the turntable platform. High-point loads will tip the platform to one inch or more. If the application involves edge loading, please contact the Autoquip Service Department to discuss possible solutions to prevent excessive platform tipping.

#### **⚠ DANGER**

The turntable base **MUST** be lagged securely to the floor or sufficient structure, or attached to a lift platform (when applicable) before operating the turntable. An unsecured base could become unstable and cause the load to shift unexpectedly resulting in serious personal injury or death.

#### **⚠ WARNING**

Load the turntable top as evenly as possible to prevent overloading. Excessive eccentric loading may overstress the turntable structure and cause the load to become unstable, possibly resulting in serious personal injury or permanent equipment damage.

#### **⚠ WARNING**

**NEVER** stand, sit, or ride on the turntable! A rotating work surface may shift position unexpectedly and cause serious personal injury.

### 5.2 Forces Required to Operate Manual Turntable

An evenly loaded 48” x 48” manual turntable has the following approximate starting and sustaining force requirements to rotate the loads shown by holding on to one of the platform corners:

Load Capacity (lbs)	Starting Force (lbs)	Sustaining Force (lbs)
1000	15	10
2000	20	15
3000	26	20
4000	32	26
5000	40	32
6000	48	40

These forces increase if the actual platform size is smaller than 48 x 48” or if the turntable is loaded unevenly

## 6. MAINTENANCE

---

### 6.1 Routine Maintenance

---

#### 6.1.1 Every Month Or 100 Hours Of Operation

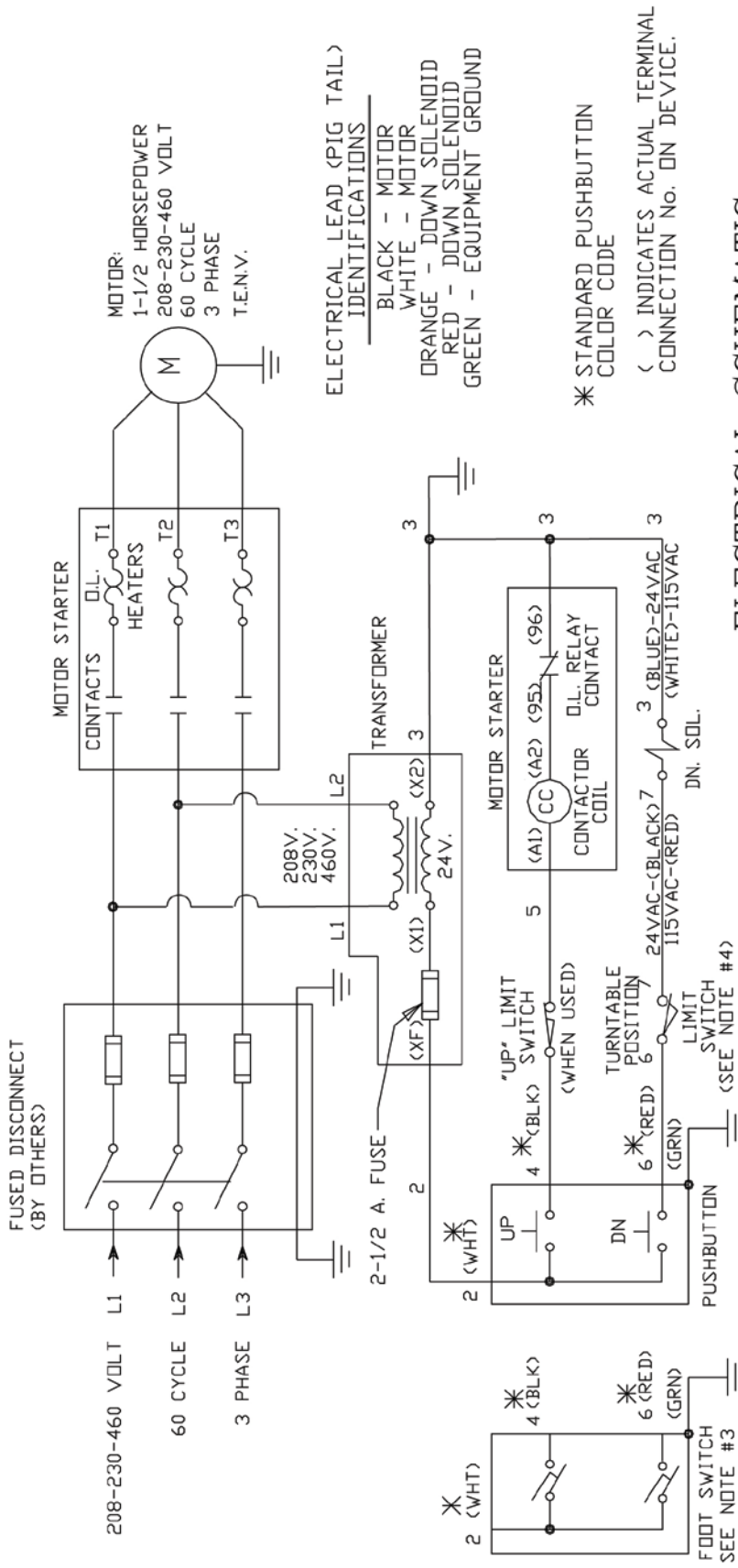
**⚠ WARNING**

**NEVER** go under a raised lift platform until load is removed and lift is securely blocked in raised position with maintenance devices.

**Lock-out/tag-out power source.**



1. Check any unusual noise when it occurs. Determine the source and correct as necessary.
2. Check the hardware at all rollers, if not in place, and/or secure, replace or repair immediately.
3. Check all rollers and bearings for signs of wear. Replace as necessary.



ELECTRICAL LEAD (PIG TAIL) IDENTIFICATIONS

- BLACK - MOTOR
- WHITE - MOTOR
- ORANGE - DOWN SOLENOID
- RED - DOWN SOLENOID
- GREEN - EQUIPMENT GROUND

\* STANDARD PUSHBUTTON COLOR CODE

( ) INDICATES ACTUAL TERMINAL CONNECTION No. ON DEVICE.

## ELECTRICAL SCHEMATIC

TYPICAL PILOT CONTROLS ONLY

1. MOTOR STARTER, CONTROL TRANSFORMER, OVERLOADS, AND FUSES TO BE MOUNTED IN NEMA 1 ENCLOSURE, AND PRE-WIRED TO POWER UNIT.
2. TRANSFORMER PRIMARY CONNECTION DIAGRAMS ARE LOCATED ON INSIDE OF FRONT COVER.
3. FOOTSWITCH IS SHIPPED LOOSE FOR INSTALLATION BY OTHERS (WHEN ORDERED).
4. TURNABLE POSITION LIMIT SWITCH (NORMALLY OPEN, HELD CLOSED) IS USED TO PREVENT LIFT

### NOTES:

COPYRIGHT RESERVED AUTOQUIP CORPORATION		JOB NAME:		ORDER NO.:	
REFERENCE DRAWING: 658-1553-0		DRAWING TITLE: ELEC SCH; SM SER; 1 1/2 HP/3PH/60 CY; 24 VOLT CNTRL W/TT POS LMTSW		REV.:	
APPROXIMATE WEIGHT:		DRAWN BY: DATE: LO 4/24/97		REV.:	
		QTY REQ'D: PAGE: 1 of 1 2		DRAWING NUMBER: 657-0032-0	
				SIZE: A	

## 7. TROUBLESHOOTING

---

**⚠ WARNING**

Prevent serious injury or death.

Disconnect and/or lock out electrical supply to power unit prior to any maintenance being performed.



PROBLEM	POSSIBLE CAUSE AND SOLUTION
Turntable is difficult to rotate	<p>There may be roller damage. Check the turntable base rollers for proper alignment and possible bearing damage. Replace as necessary.</p> <p>The load is not evenly distributed on the platform. Make sure that the center of gravity of the load is within 10" of the center of the turntable.</p> <p>One or more roller tubes are not sitting vertically on the base plate. Make sure that each roller tube is perpendicular to the base plate (it could have been bent slightly during shipping/handling). Call the factory for base replacement.</p> <p>The thrust washers are not installed properly. See Figure 5 in the Installation Section to ensure that the center pin thrust washers have been installed properly. Missing washers will cause the platform to "dish" in the center when bolted in place.</p> <p>The center pin-retaining bolt has been over tightened. The retaining bolt should be backed off and retightened using no more than 80 ft. lbs of torque.</p> <p>If the turntable was provided with detents, the detent bar may be set too tight. There is an adjustment screw to lessen the stopping pressure against the detent pins.</p>
Turntable is making a popping noise.	<p>One or more roller tubes are misaligned with respect to the center pin. Each tube should be perpendicular to the center pin, or the platform will roll across the roller instead of rolling over it. Perpendicularity can be checked using a large square. Call the factory for base replacement.</p>

## 8. PARTS

---

PART NUMBER	DESCRIPTION
52605060	Roller with Bearing
35106120	Bolt and Washer Kit for SR4 Turntable